

Who's IT FOR?

There isn't just one type of client for the Color Fresh Mask. There is a mask for everyone.

Often clients want to maintain their professional coloring, and many would like to transform from their everyday look or to just create a playful twist with their tones!

HERE ARE THREE REASONS WHY THE COLOR FRESH MASK CAN BE IDEAL FOR YOUR CLIENTS

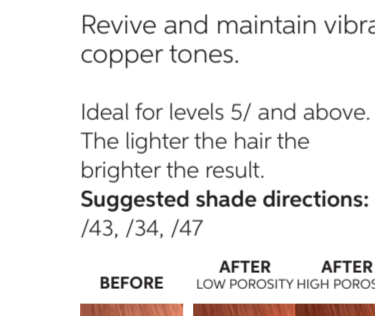
1. NEUTRALIZE AND REDUCE BRASSY TONES



2. REVIVE AND REFRESH DESIRED TONE



3. CREATE PASTEL TO BOLD VIBRANT TRANSFORMATION



lilac frost



Anti-yellow formula to revive blonde hair, ideal for pre-lightened and lighter tones.

Suggested shade directions: /69, /96, /16

	BEFORE	AFTER LOW POROSITY	AFTER HIGH POROSITY
PRE-LIGHTENED			
LEVEL 9/0			
LEVEL 8/0			

RESULTS NOT NOTICEABLE ON DARKER LEVELS



golden gloss



Revive light blonde and highlighted hair with sophisticated golden tones.

Suggested shade directions: /03, /3, /7, /31, /38

Tip: For darker or when more warmth is needed try Caramel Glaze.

Note: This mask appears deeper than the end result.

	BEFORE	AFTER HIGH POROSITY
LEVEL 9/ TO PRE-LIGHTENED		
LEVEL 8/0		
LEVEL 7/0		

RESULTS NOT NOTICEABLE ON DARKER LEVELS



chocolate touch



Revive brunette hair with an elegant rich chocolate tone.

Suggested shade directions: /7, /75, /76, /77

	BEFORE	AFTER LOW POROSITY
BALAYAGE/ HIGHLIGHTS		
LEVEL 6/0		
LEVEL 5/0		
LEVEL 4/0		

RESULTS NOT NOTICEABLE ON DARKER LEVELS



pearl blonde



Ideal for pre-lightened and lighter levels to maintain platinum finish without dramatically changing the tone.

Suggested shade directions: /81, /8

Tip: For more neutralization try Lilac Frost

	BEFORE	AFTER LOW POROSITY	AFTER HIGH POROSITY
LEVEL 9/ & PRE-LIGHTENED			
LEVEL 8/0			

RESULTS NOT NOTICEABLE ON DARKER LEVELS



caramel glaze



Revive medium blonde and brunette balayage hair types with a caramel finish.

Suggested shade directions: /35, /7, /73

	BEFORE	AFTER LOW POROSITY
BALAYAGE/ HIGHLIGHTS		
LEVEL 8/0		
LEVEL 7/0		
LEVEL 6/0		

RESULTS NOT NOTICEABLE ON DARKER LEVELS



rose blaze



Create deep rose tones on medium blonde and pre-lightened hair. The lighter the hair the brighter the rose.

Suggested shade directions: /5, /65, /75

	BEFORE	AFTER LOW POROSITY	AFTER HIGH POROSITY
LEVEL 8/ TO PRE-LIGHTENED			
LEVEL 6/0			
LEVEL 5/0			

RESULTS NOT NOTICEABLE ON DARKER LEVELS



copper glow



Revive and maintain vibrant copper tones.

Ideal for levels 5/ and above. The lighter the hair the brighter the result.

Suggested shade directions: /43, /34, /47

	BEFORE	AFTER LOW POROSITY	AFTER HIGH POROSITY
FADED WARM GOLDEN & COPPER TONES			
LEVEL 8			
LEVEL 6/0			
LEVEL 5/0			

RESULTS NOT NOTICEABLE ON DARKER LEVELS



mint



Make a statement with fresh mint.

	BEFORE	AFTER LOW POROSITY	AFTER HIGH POROSITY
PRE-LIGHTENED			
LEVEL 8/0			
LEVEL 5/0			

RESULTS NOT NOTICEABLE ON DARKER LEVELS



red



Transform blonde hair or maintain Color FRESH Create Next Red.

	BEFORE	AFTER LOW POROSITY	AFTER HIGH POROSITY
PRE-LIGHTENED			
LEVEL 8/0			
LEVEL 5/0			

RESULTS NOT NOTICEABLE ON DARKER LEVELS

How TO USE?



1 Shampoo and towel dry hair.

2 Use protective gloves to avoid staining your hands and nails.



3 Apply generously, section by section- leave for up to 10 minutes.

4 Rinse well, style and go no need for conditioner!



pink



Transform blonde hair or maintain Color FRESH Create High Magenta.

	BEFORE	AFTER LOW POROSITY	AFTER HIGH POROSITY
PRE-LIGHTENED			
LEVEL 8/0			
LEVEL 5/0			

RESULTS NOT NOTICEABLE ON DARKER LEVELS



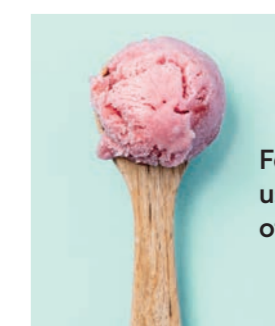
blue



Transform pre-lightened hair or maintain Color FRESH Create New Blue.

	BEFORE	AFTER LOW POROSITY	AFTER HIGH POROSITY
PRE-LIGHTENED			
LEVEL 8/0			
LEVEL 5/0			

RESULTS NOT NOTICEABLE ON DARKER LEVELS



For medium length and textures, use approximately 30g (the size of a small scoop of ice cream)