

#### Maintenance advice

Regular maintenance of the upholstery is required in order to retain the product's original brightness and colour. Daily cleaning using a soft sponge with neutral soap and tepid water is recommended. No fabric is guaranteed against stains and general misuse. Forbidden: pure alcohol, solvents and chemical products, wax products, abrasive materials. Recommended: Salon Ambience plastic protective covers. These covers increase the protection of the product.

#### Consigli per la pulizia

È consigliabile pulire regolarmente la tappezzeria, al fine di mantenere il colore e la lucentezza del prodotto originale. Si raccomanda di pulire quotidianamente la tappezzeria, utilizzando una spugna morbida con un sapone neutro e acqua tiepida. Nessun materiale è garantito contro le macchie e un generale cattivo utilizzo del prodotto. Sostanze vietate: alcool puro, solventi o prodotti chimici, cere, prodotti abrasivi. Si raccomanda l'utilizzo delle copertine protettive in plastica Salon Ambience per una maggiore protezione dell'articolo.

#### Wichtige Pflegehinweise

Regelmäßige Pflege erhält die Struktur und Farbe Ihrer hochwertigen Salon Ambience Bezugsstoffe. Wir empfehlen die tägliche Reinigung mit einem weichen Schwamm, lauwarmen Wasser und Neutralseife. Keine Gewährleistung / Garantie bei missbräuchlichem Einsatz. Verfärbungen durch Übertragung von Textil-Farben (z.B. Jeans), Flecken durch z.B. Haarfarbe und unsachgemäßer Polsterpflege! Alkohol, Lösungsmittel - wachshaltige oder scheuernde Reinigungsmittel dürfen nicht verwendet werden! Die Rückenlehnen Ihre wertvollen Salon Ambience Sitzmöbelpolster schützen Sie vor Verunreinigungen durch den Einsatz von Salon Ambience Stuhlschonern.

#### Onderhoudsadvies

Om de helderheid en kleur van onze producten te handhaven moet de stoffering regelmatig onderhouden worden. Dagelijkse reiniging met een zachte spons met een neutrale zeep en lauw water wordt aanbevolen. Geen enkele bekledingsstof is gegarandeerd tegen vlekken en algemeen wangebruik. Verboden Pure alcohol, Oplosmiddelen en chemicaliën. Wasproducten en schuurmaterialen. Aanbevolen: Salon Ambience plastic beschermhoezen. Deze hoezen helpen uw producten goed te beschermen tegen verontreinigingen.

#### Conseils d'entretien

L'entretien régulier des revêtements est indispensable afin de conserver l'éclat et la couleur d'origine. Le nettoyage quotidien est à réaliser à l'aide d'une éponge douce, humide et de savon neutre. Aucun tissu n'est garanti contre les taches et agressions de toutes natures. Interdiction d'utiliser alcool pure, acétone, tout solvants détergents et détachants et tout produits d'entretiens abrasifs. Recommandations: Salon Ambience propose des housses plastiques afin de protéger au mieux les revêtements.

#### Consejos para la limpieza

Es aconsejable limpiar regularmente la tapicería, con el fin de mantener el color y el brillo original. Recomendamos limpiar diariamente la tapicería, utilizando una esponja húmeda, jabón neutro y agua tibia. Ningún material está garantizado contra las manchas ni contra el mal uso del artículo. Sustancias prohibidas: alcohol puro, disolventes o productos químicos, ceras y productos abrasivos. Recomendamos la utilización de fundas de plástico Salon Ambience para proteger el respaldo con el fin de aumentar la protección del artículo.

Via Lazzaretti  
42122 Reggio Emilia - Italia

Sales Italia  
+39 0522 276740

International Sales  
+39 0522 276755

E-mail  
info@salonambience.com  
info@medicalandbeauty.com  
info@luca-rossini.com

Web  
www.salonambience.com  
www.medicalandbeauty.com  
www.luca-rossini.com

Facebook - Instagram  
salonambiencegroup  
medicalandbeautydesign  
lucarossinifurniture

Visit our websites

Salon Ambience



MEDICAL & BEAUTY



Luca Rossini



MADE IN ITALY

Salon Ambience MEDICAL & BEAUTY Luca Rossini

COLOUR BOOKLET

2024

MADE IN ITALY

# Salon Ambience

MEDICAL & BEAUTY

Luca Rossini

MADE IN ITALY

COLOUR BOOKLET

2024



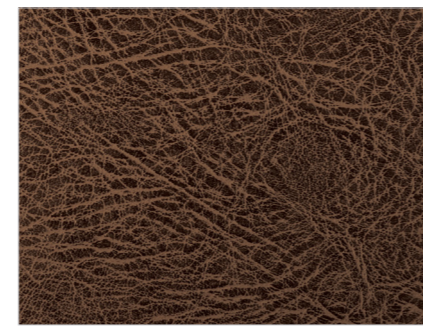
champagne 10



black coffee 59



hot chocolate 60



vintage brown F5



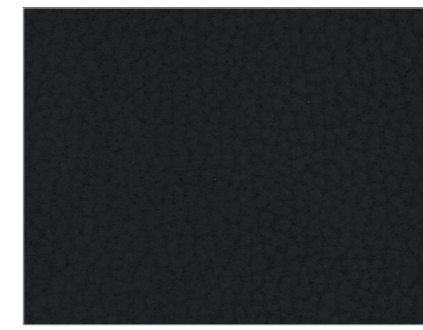
vintage black G1



vintage tan G2



pebble black N1



slate grey N2



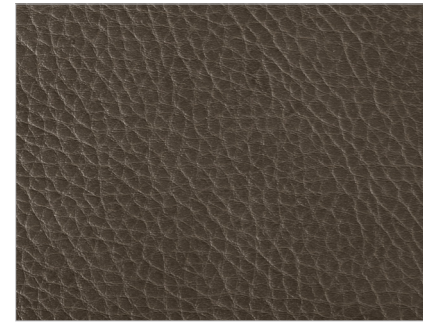
peacock blue N3



milk 61



tea 62



cappuccino 63



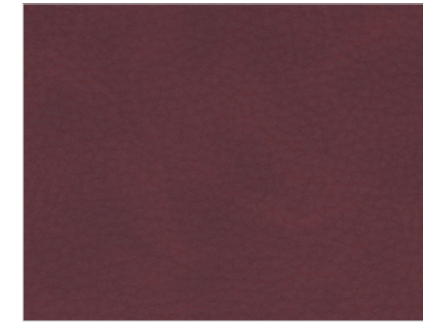
vintage white G3



vintage ash G4



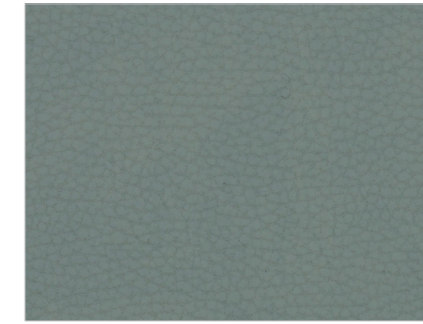
vintage chocolate H9



mulberry N4



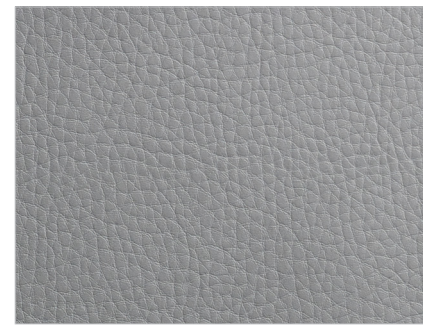
cognac N5



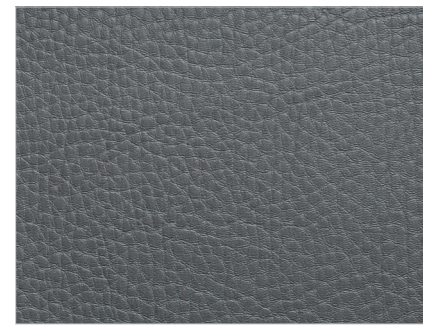
sage green N6



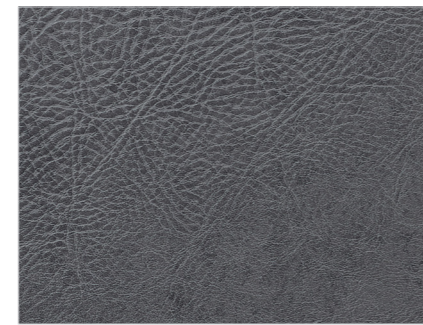
espresso 64



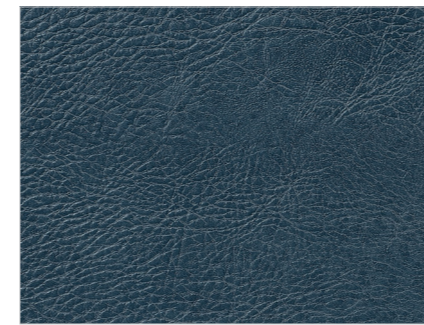
light grey G5



dark grey G6



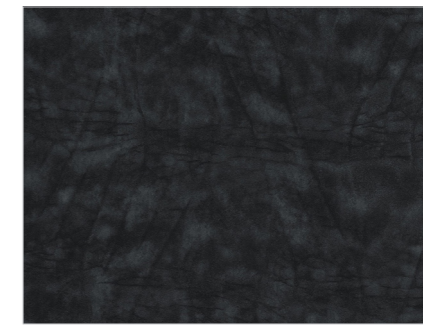
vintage grey K1



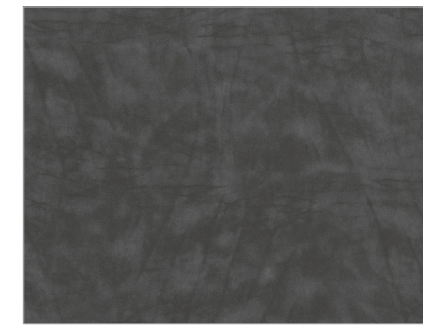
vintage blue K2



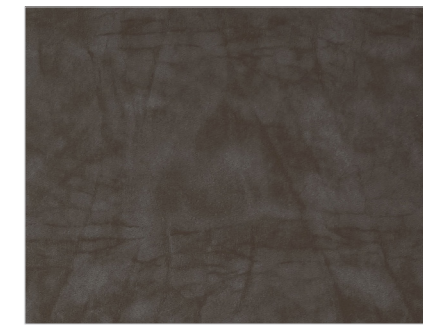
vintage wine K7



black pearl P1



grey pearl P2



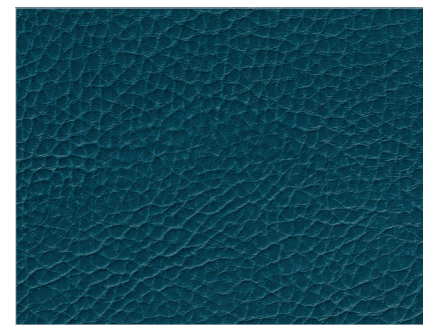
brown pearl P3



olive G8



royal blue G9



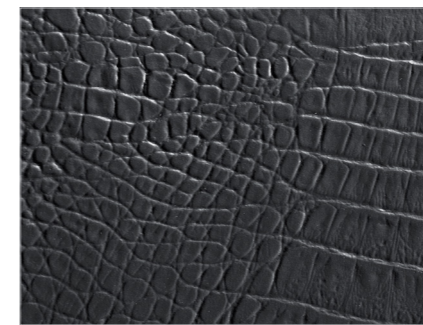
marine L2



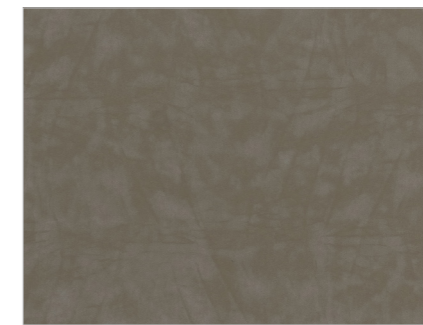
vintage ice K8



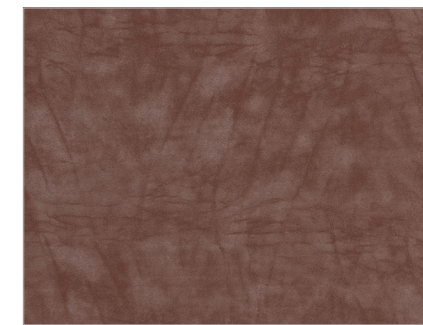
black alligator 49



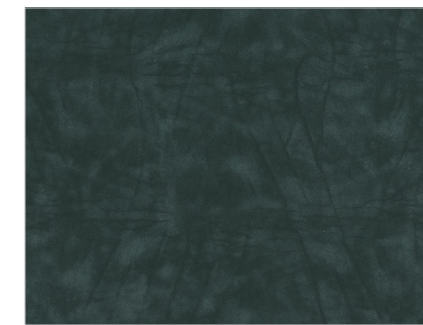
grey alligator 50



beige pearl P4



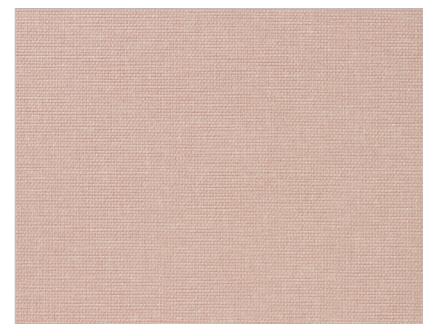
cognac pearl P5



green pearl P6



chocolate milk K3



strawberry milk K4



gold K6



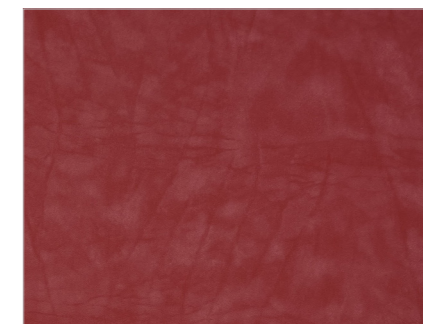
**FLAME RETARDANT**  
Class 1IM (oneim)  
Test Method UNI 9175  
**CLASSIFICAZIONE DI REAZIONE AL FUOCO**  
Si classifica classe 1IM (unoiemme) secondo norma UNI 9175



**WIDE CHOICE OF COLOURS**



yellow pearl P7



red pearl P8



pink pearl P9